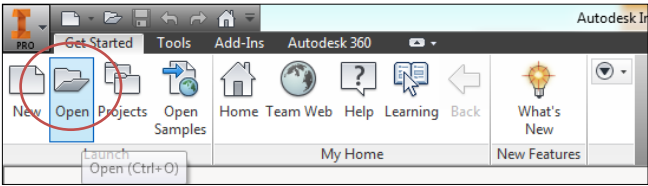


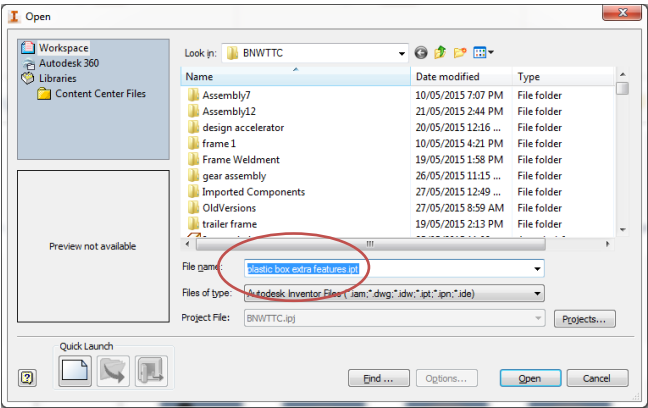
Plastic Part. Extra Features

Use Plastic Part tools to create extra features on a small plastic instrument box.



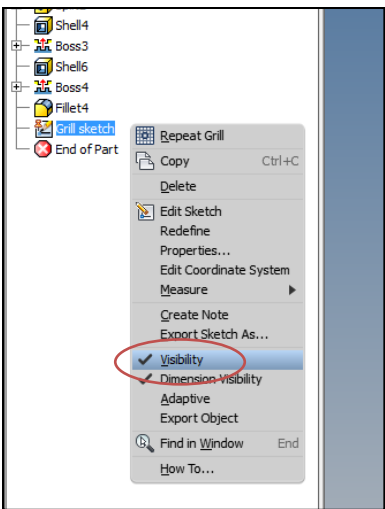
Step # 1. From the *Get Started* Tab , select *Open*.

FIG 1.0



Select *Plastic Box extra features.ipt* , select *Open*.

FIG 2.0



Step # 2. In the Browser, right click on *Grill Sketch* and set it to *Visible*.

FIG 3.0

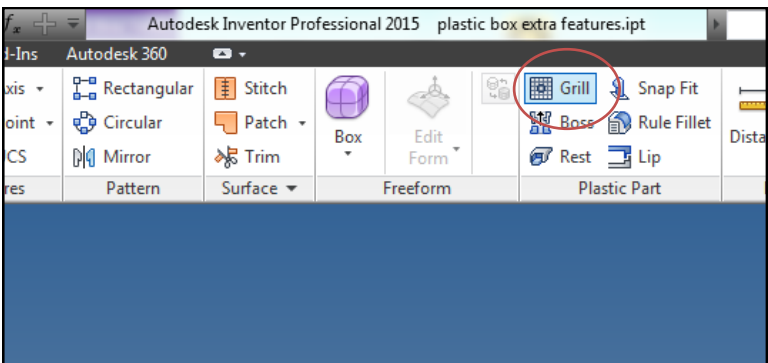


FIG 4.0

Step #3. On the *3D Model* Tab, on the *Plastic Part* Panel, select the *Grill* Command.

Step # 4. In the Grill dialog box, on the Boundary Tab, select the rectangular profile. Use the values shown in Fig 5.0

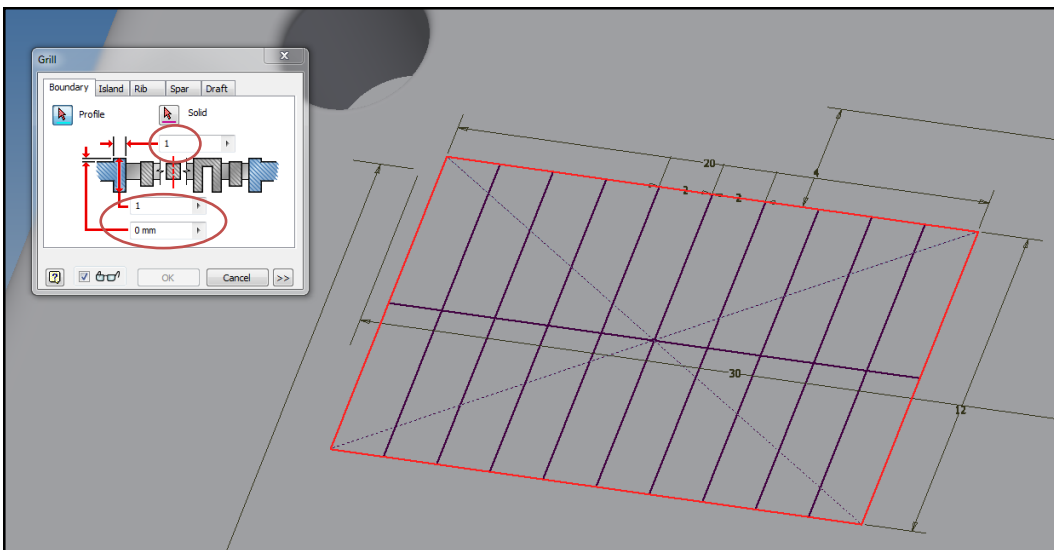


FIG 5.0

Step # 5. Select the Rib Tab, and using the values shown in Fig 6.0, select all the remaining lines.
OK the dialog box.

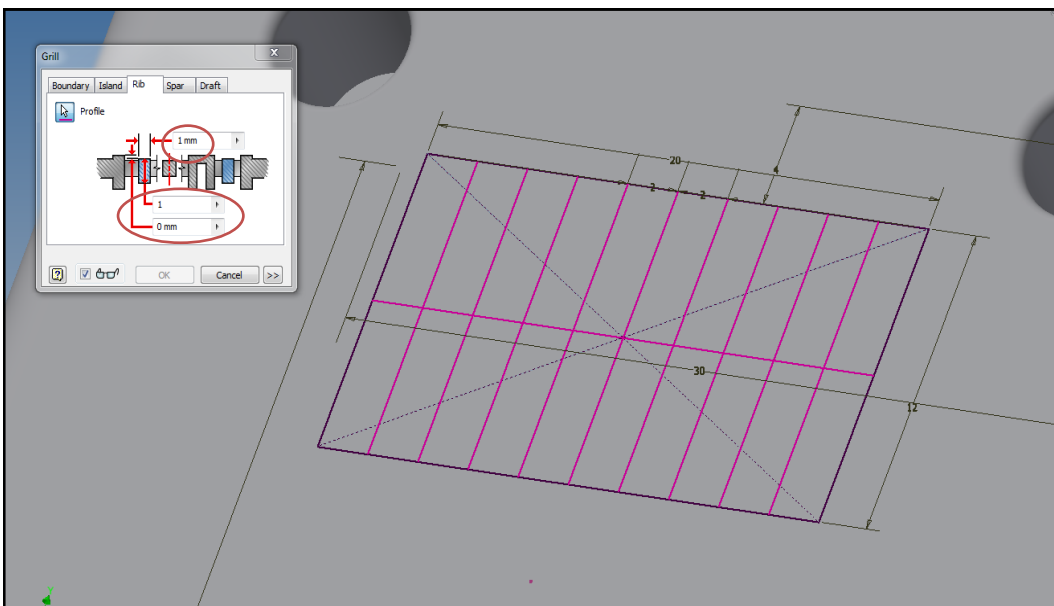


FIG 6.0

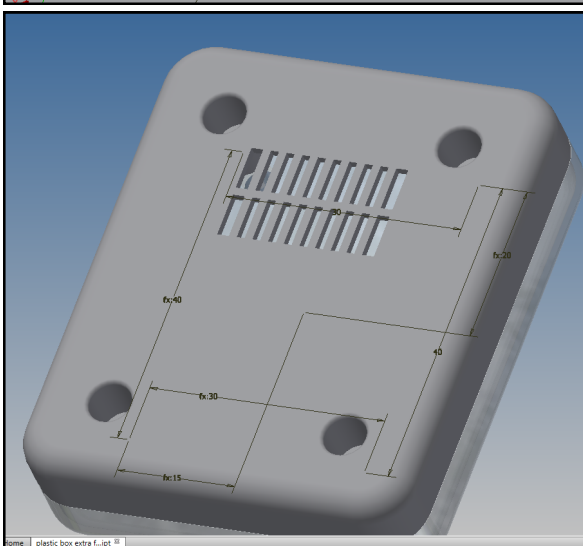
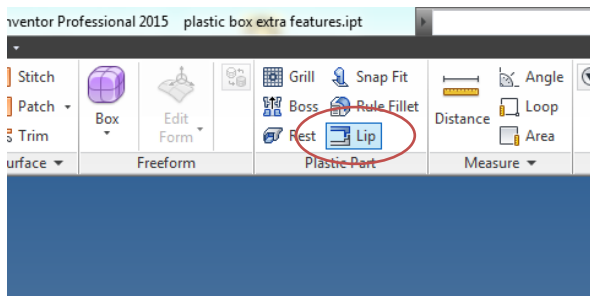


Fig 7.0 show results from the *Grill* command.

FIG 7.0

Step # 6. Create a Lip Feature on the parting line of the plastic box.



On the *Plastic Part Panel*, select the *Lip* command.

FIG 8.0

Step # 7. Select the Lip button.

On the *Shape Tab*, select the edge of the part as shown in Fig 9.0

Select the Guide Face Button, then select the face as shown in Fig 9.0a .

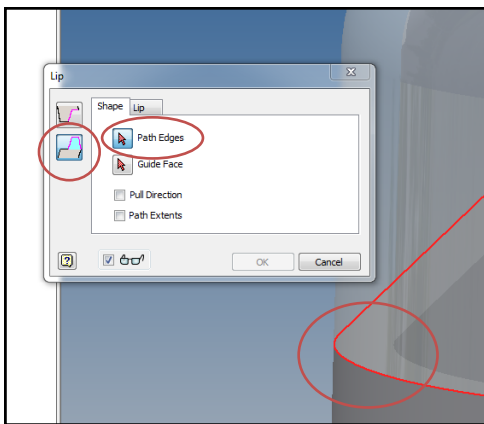


FIG 9.0

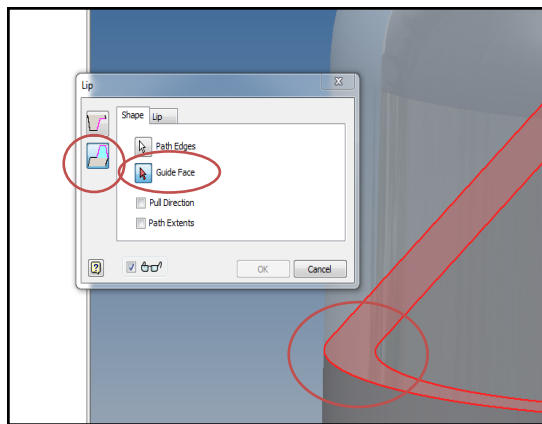


FIG 9.0a

Step # 8. Select the Lip Tab.

Set the values for the lip as shown in Fig 10.0

OK the dialog box.

Results should be as shown in Fig 11.0 (Change the Visibility of Solid Body 5 for better clarity if needed)

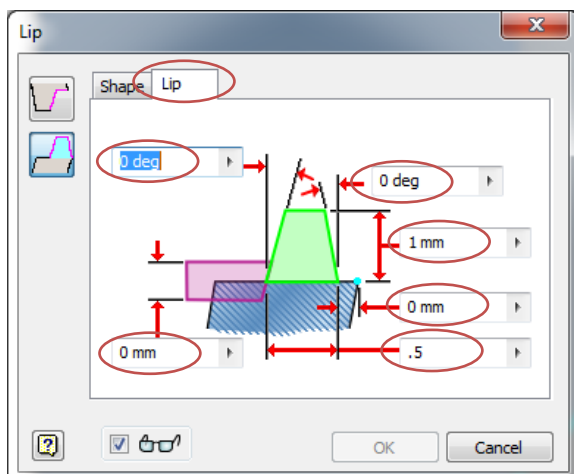


FIG 10.0

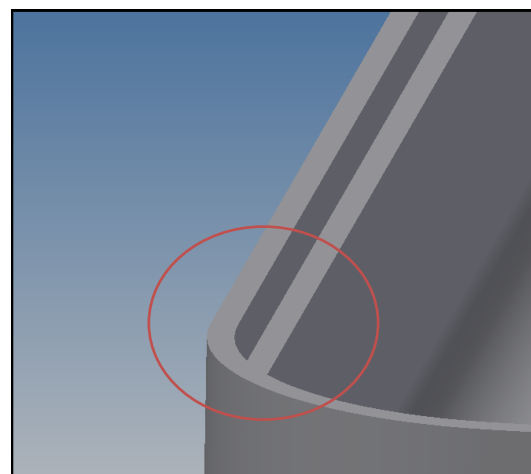


FIG 11.0

This time select the Groove button, then select Path Edges and Guide Face as in the Lip example.

Turn off the Visibility of *Solid 4* for better clarity if necessary.

On the Groove Tab in Fig 12.0a, set the values as shown.

OK the Dialog Box.

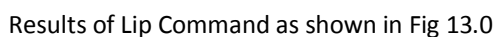
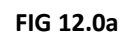
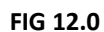
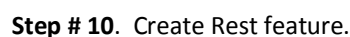


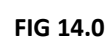
FIG 13.0



In the Browser, right click on *Rest Sketch* and set it to *Visible*

On the *Plastic Parts Panel*, select the *Rest Command*.

In *Rest command* dialog box select the *Rest Sketch*.



Step # 11. On the *Rest Dialog box* set the values to those shown below in Fig 15.0 and Fig 15.0a

Ok the dialog box.

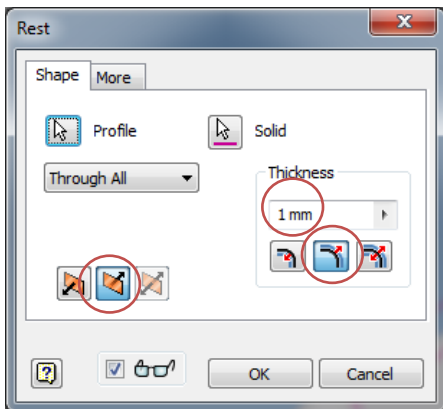


FIG 15.0

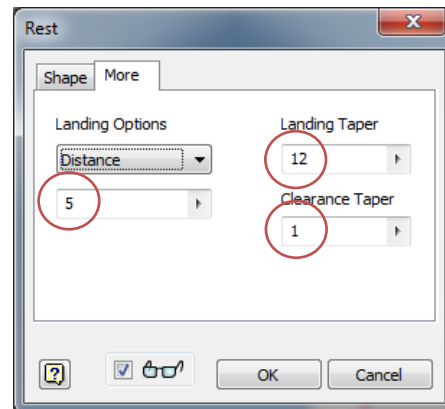
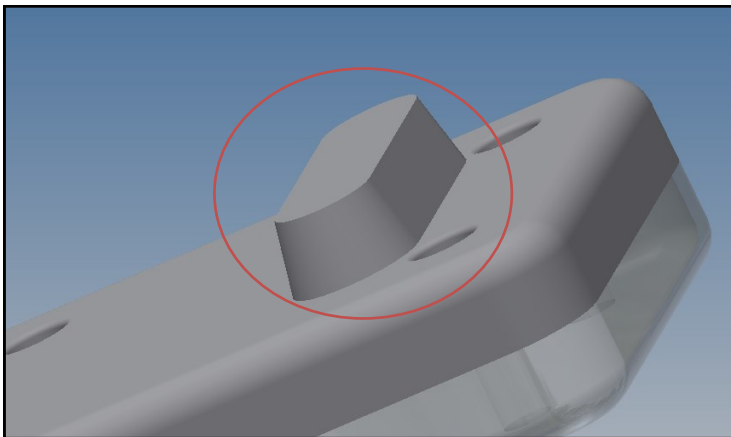


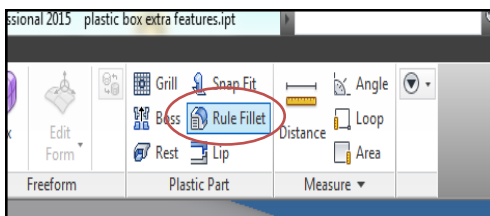
FIG 15.0a



Rest Command results are shown in Fig 16.0

FIG 16.0

Step # 12. The Rule Fillet Command.



On the *Plastic Part Panel*, select the *Rule Fillet* command.

Step # 13. Using a Radius of 0.2 and a selection method of *All Edges*, select the *Grill Feature*.

As shown below in Fig 17.0

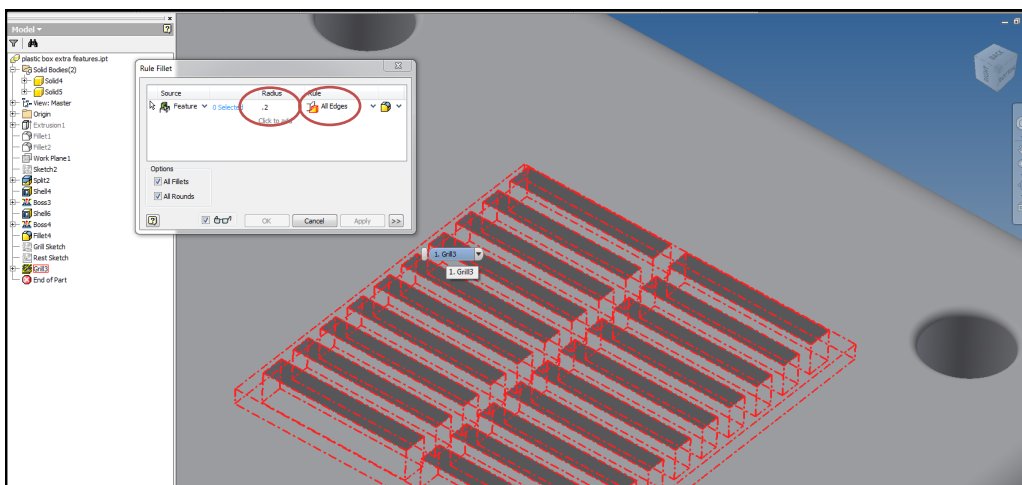
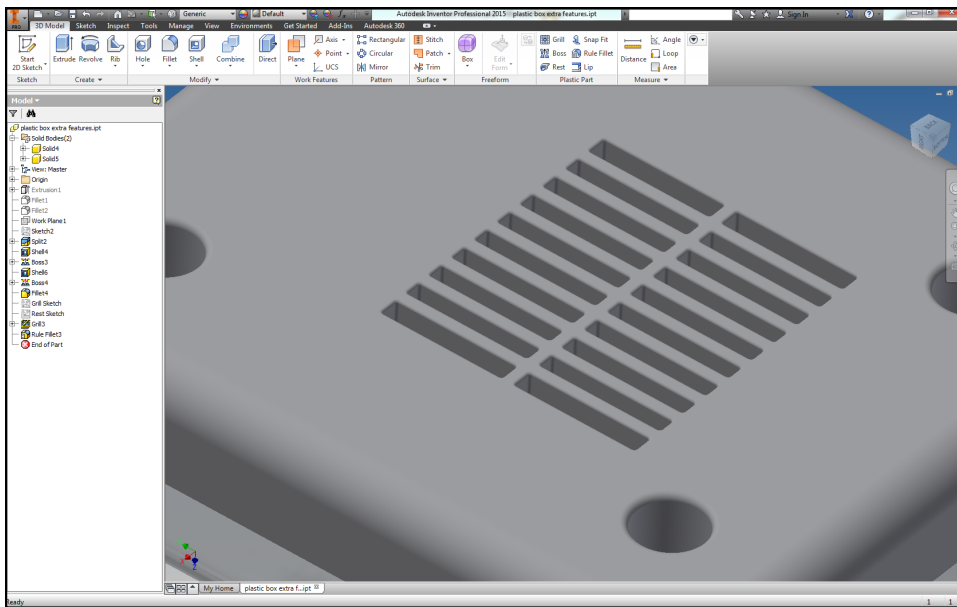


FIG 17.0



Results of the *Rule Fillet Command* are shown in Fig 18.0

FIG 18.0